

Re-fixing the hands on the 25 foot diameter south dial of the Royal Liver Building, Liverpool

17th February 2018.

The project included the removal, restoration and
re-fixing of the hands; it was undertaken by
The Cumbria Clock Company Ltd



Some time ago the hands were removed by the Cumbria Clock Co, with help from Skyline Abseil Access. After a thorough overhaul at Cumbria Clocks' Dacre workshops, they were returned and re-positioned on 17th February 2018.





It's not a job to be rushed.

Preparation is key...







Each hand was wrapped to avoid damage whilst it was being hoisted 220 feet up into place.



Almost
there

Hoisting the
hour hand over
the parapet.

Keith is getting
ready to guide
the hand into
position.





Keith tightens the fixings.

Work can now begin on the minute hand.

Time for lunch first....

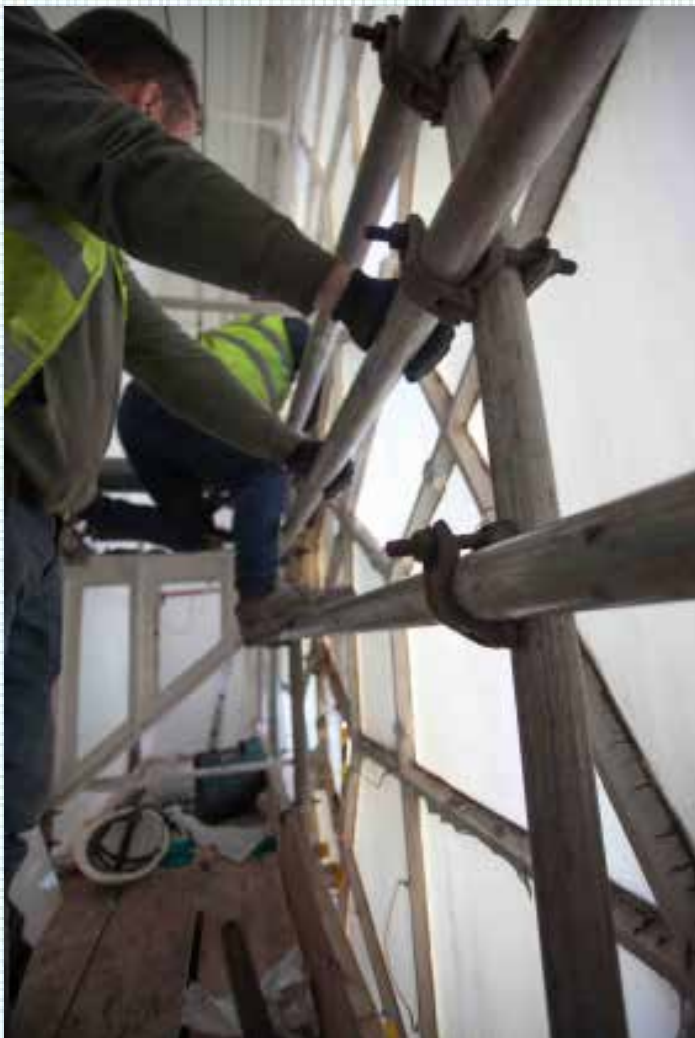


Above:
The team from
Skyline Abseil Access





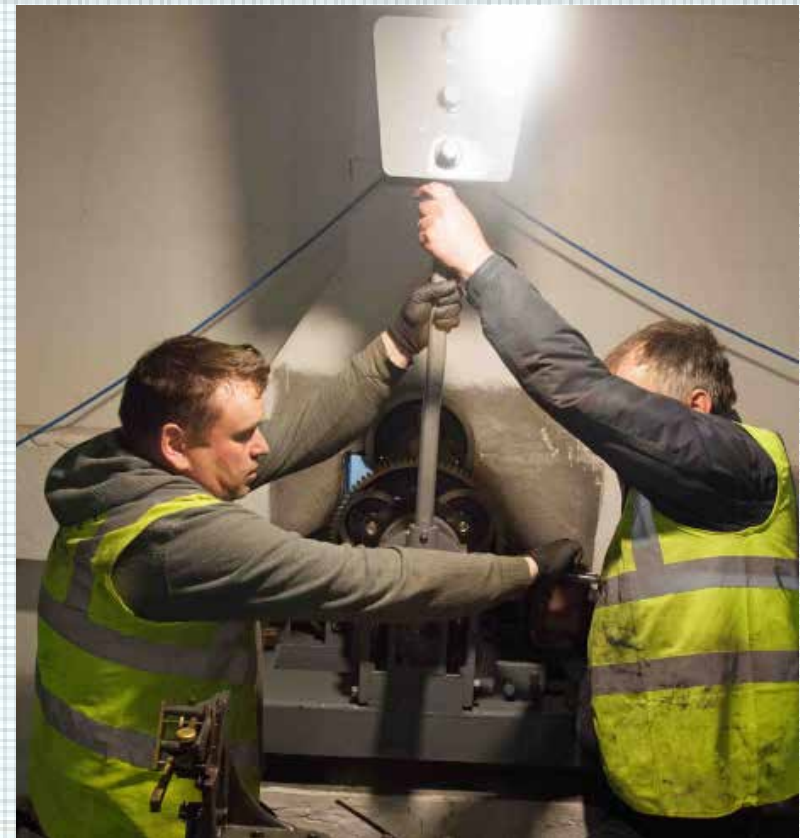




Left and below left:
The opening in the dial
was just large enough!



Fitting the counter-
weight.





Once the counterweight was correctly positioned and tightened, the motionworks were connected up.



With the light fading fast outside the dials were illuminated.





Only three more pairs of hands to go